

S1 TEST FOR NEW CURRICULUM

ATTEMPT ALL

1 HOUR

NAME STREAM

1. In order to distinguish between living and non-living things, one has to look at life processes, as a S1 student with a good scientific background;

a) What is meant by the term life process?

.....
.....

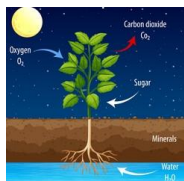
b) Identify at least 5 life processes you know

.....
.....
.....
.....
.....

c) From the pictures below, tell the life process and why?



.....
.....



.....
.....

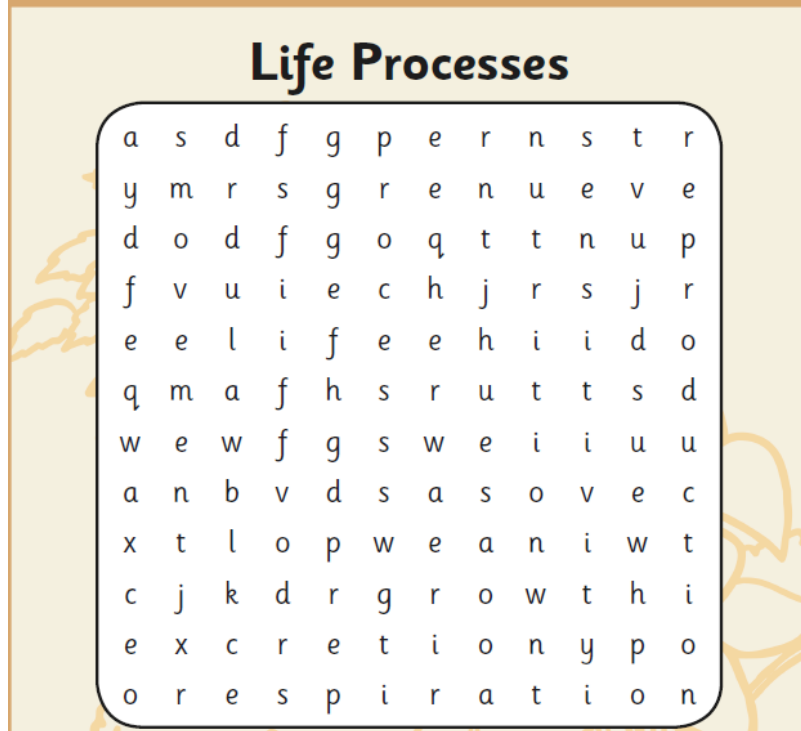


.....
.....



.....
.....

2. Search for and circle seven words that refer to life processes. The words may appear straight across, backward straight across, up-down, down-up, or diagonally.



Identify at 4 structures that are usually present in

- a) Both animal and plant cells?

.....

.....

.....

.....

- b) Plant cells but not in animal cells?

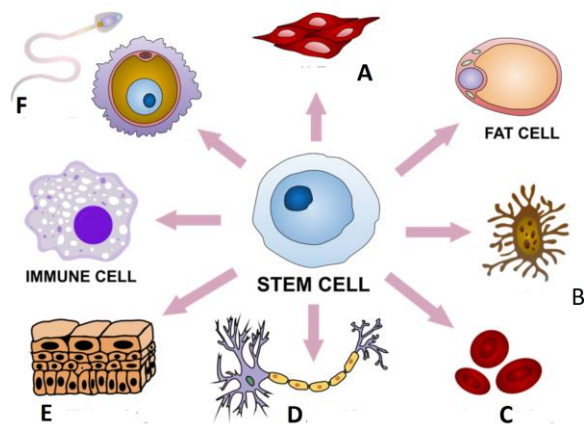
.....

.....

.....

.....

3. Below are some specialized cells, name the cells and state how they are adapted to perform their functions



CELL	NAME	ADAPTATION(S)
A		
B		
C		
D		
E		
F		

- b) What cell structure is largely responsible for controlling the entry and exit of substances into or out of the cell?

.....

.....

- c) How does a cell membrane differ from a cell wall?

.....

.....

- d) Below is the list of systems and their functions in the body. Match the systems to their corresponding functions

Lymphatic system	Filters waste from the blood
Digestive system	Produces gametes
Circulatory system	Exchanges gases between the body and the surrounding
Respiratory system	Transports materials around the body
Urinary system	Breaks down food substances for absorption
Reproductive system	Defends the body against disease